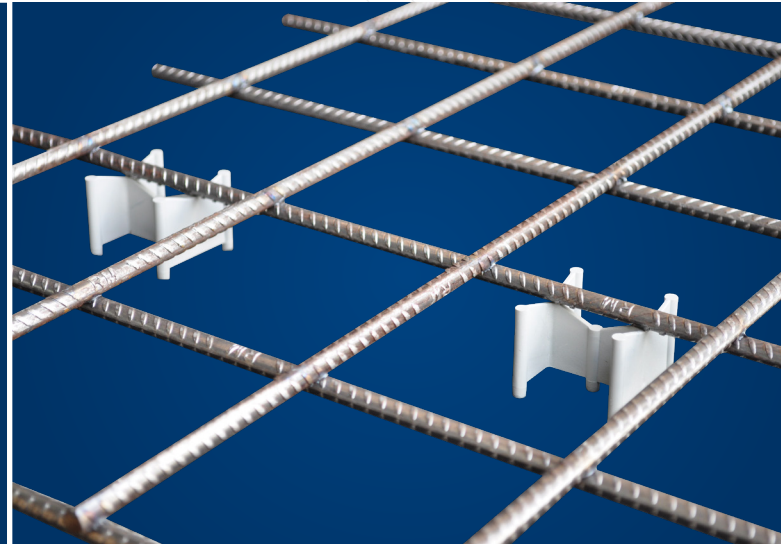
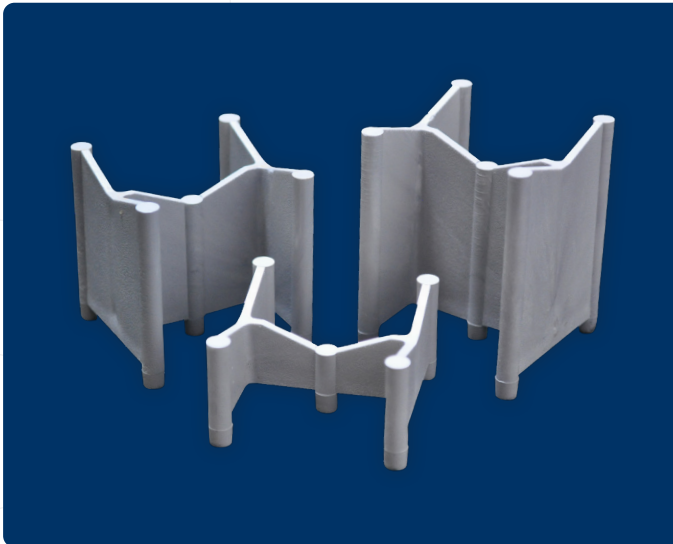


Plastic Bottom Deck Spacers



Bottom Deck Spacers have been designed to support both mesh and large bars in suspended decks, precast beams and panels, and tilt-up applications. Bottom Deck Spacers are light, dual heights and have no rust problems.

Strong and stable, the spacers have 5 small dimples that ensure minimal form contact. The dimples also allow for tie wire to be placed under the spacer for fixing reo if required.

Having supports for the reo with no clips, means one spacer fits all common reo size, saves steel-fixing time in horizontal applications, and the strain on hands pushing clips all day.

Tested to AS/NZS 2425:2015

Product Code	Height (mm)		Qty/ Bag
	a	b	
BPDS 15/20	15	20	100
BPDS 25/30	25	30	100
BPDS 35/40	35	40	100
BPDS 45/50	45	50	100

Refer to Novabone page for heavy duty bottom deck spacers (page 13).

